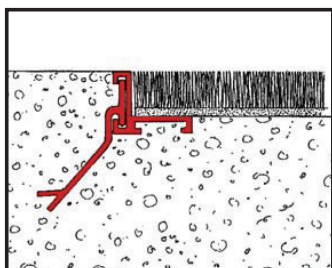
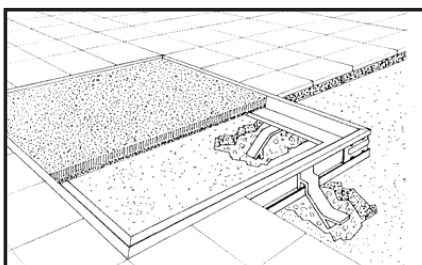


### Technical data sheet - GB



#### DESCRIPTION

Metal profiles to be set into the floor. The single 17/23 model can be laid either way up, providing a frame for 17 mm or 23 mm thick brush mats.



#### USAGE

Matwell profiles, cut to measure but unassembled, can be rapidly supplied. This allows installation to go ahead while waiting for delivery of the entrance mat.

MATERIAL	17-23 mm	13 mm
Alu silver	6105	6107
Brass	6106	

\*Service available only when also ordering ROMUS mats  
Supplied without angle connector and without fixing feet.

Réf 16104

Feet

To be set into  
the concrete  
floor. Pack of 8.



Réf 16104

Angle connector -  
Raw aluminium

To make the frame.  
Pack of 4.  
Sachet de 8.



Architect / Company :

Project :

E-mail :

Phone :

Distributor :

Phone :

E-mail :